



LINE CONTROL SPECIFICATION SHEET

The **Line Control Module (LCM)** revolutionises packhouse efficiency by delivering a single-button set-up for all production line equipment. This ensures every piece of task-specific machinery is correctly configured for the planned production run, quickly and accurately.

Efficient packing line operation depends on precise hardware and software configuration. Traditionally, this process is labour-intensive, requiring skilled technicians to configure each machine individually. LCM eliminates this complexity with a fast, simple 'one-button' procedure, saving time and reducing labour demands.

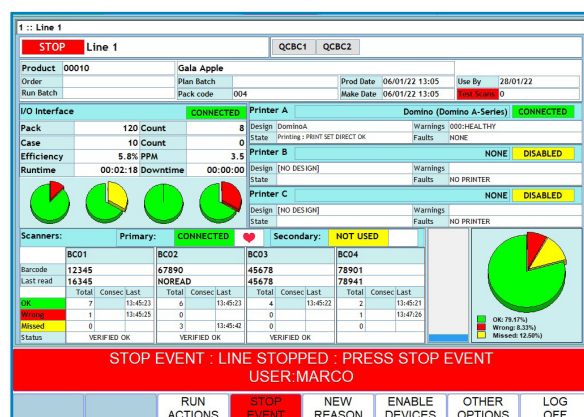
Key Benefits

- **Rapid Changeovers:** Speeds up product changes and overall set-up time.
- **Reduced Labour Costs:** Minimises reliance on technical staff for manual configuration.
- **Enhanced Productivity:** Keeps your line running at peak efficiency.

LCM embeds the technical expertise into its communication protocols, applying exact product data across all equipment with a single command.

Once the line is set up, LCM continues to monitor performance in real time, **enabling managers to make instant, data-driven decisions** rather than reacting after the event.

Beyond set-up, LCM introduces a powerful feature for building performance standards. These benchmarks define expected results for the entire packing facility and overlay them on live factory data, giving you complete visibility and control.



KEY FEATURES OF LCM

- Accurate packaging & labelling
- Faster line setup
- Real-time reporting & traceability
- Easy product updates via touch screen
- Full visibility across the production process
- Improves decision-making with actionable data

BENEFITS OF LCM

- Accuracy & Consistency
- Efficiency
- Enhanced Traceability
- Real-Time Insights
- Agility
- Management Control